

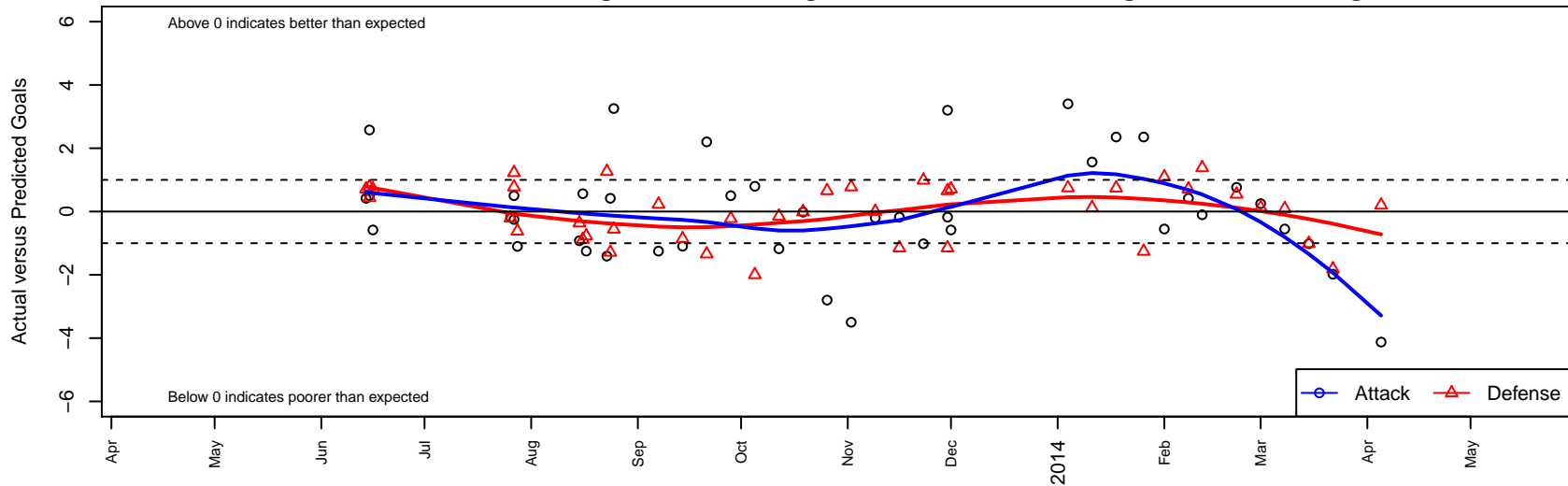
Seattle United NE Blue B01

Seattle United Regional
 Seattle, WA
 B01 total strength=735
 attack=0.9 defense=0.71
 fall league = NPSL B12D2, NPSL Spr B12D1
 alt names used:
 SU B01 NE Blue
 Seattle United B01 NE Blue
 SEATTLE UNITED B01 BLUE NE ()
 Seattle United NE Blue
 Seattle United NE B01 Blue
 2013 Seattle United NE B01 Blue

Venues played:
 Shoreline Classic BU12
 Crossfire Select Cup BU12 Gold
 Bigfoot Silver U12
 Xtreme Cup BU12
 NPSL B12D2
 Cranberry Cup U12
 Founders Cup B01
 NPSL Spr B12D1



Seattle United NE Blue B01
 Dots are actual minus expected GF (blue circles) and GA (red triangles).
 Blue line is smoothed change in attack strength. Red is smoothed change in defense strength.



	date	home		away		venue	pred.home	pred.away
25639	2014-04-05	Snohomish United White B01	0	Seattle United NE Blue B01	1	NPSL Spr B12D1	0.20	5.13
25171	2014-03-22	Seattle United NE Blue B01	9	Marysville Force B02	2	NPSL Spr B12D1	10.98	0.18
24578	2014-03-15	Seattle United Shoreline Blue B01	2	Seattle United NE Blue B01	1	NPSL Spr B12D1	0.99	2.02
23900	2014-03-08	Crossfire Select Taylor B01	1	Seattle United NE Blue B01	1	NPSL Spr B12D1	1.09	1.55
23439	2014-03-01	Seattle United NE Blue B01	2	Mercer Island FC Heat B01	1	NPSL Spr B12D1	1.75	1.13
22937	2014-02-22	Seattle United NE Blue B01	7	Newport FC Supernova B02	0	NPSL Spr B12D1	6.24	0.55
22428	2014-02-12	Seattle United NE Blue B01	1	Seattle United W Blue B01	0	Founders Cup B01	1.10	1.38
22271	2014-02-08	Seattle United NE Blue B01	1	FC Edmonds Riptide B01	1	Founders Cup B01	0.58	1.71
21994	2014-02-01	Seattle United NE Blue B01	1	Crossfire Select Taylor B01	0	Founders Cup B01	1.55	1.09
21846	2014-01-26	Seattle United NE Blue B01	5	Norpoint B01	2	Founders Cup B01	2.64	0.74
21309	2014-01-18	Norpoint B01	0	Seattle United NE Blue B01	5	Founders Cup B01	0.74	2.64
21094	2014-01-11	Seattle United NE Blue B01	9	ISC Arsenal White B01	0	Founders Cup B01	7.44	0.12
20900	2014-01-04	Seattle United W White B01	0	Seattle United NE Blue B01	6	Founders Cup B01	0.75	2.60
20426	2013-12-01	Seattle United NE Blue B01	0	FC Edmonds Riptide B01	1	Cranberry Cup U12	0.58	1.71
20031	2013-11-30	Seattle United NE Blue B01	7	NSC Vortex B01	0	Cranberry Cup U12	3.80	0.66
20033	2013-11-30	Storm King B01	2	Seattle United NE Blue B01	2	Cranberry Cup U12	0.85	2.18
19084	2013-11-23	Seattle United NE Blue B01	1	Seattle United Shoreline Blue B01	0	NPSL B12D2	2.02	0.99
18418	2013-11-16	Storm King B01	2	Seattle United NE Blue B01	2	NPSL B12D2	0.85	2.18
17678	2013-11-09	Seattle United NE Blue B01	2	Impact FC Black B01	1	NPSL B12D2	2.20	1.00
16682	2013-11-02	Seattle United NE Blue B01	1	Mercer Island FC Cascade B01	0	NPSL B12D2	4.50	0.78
15793	2013-10-26	NSC Vortex B01	0	Seattle United NE Blue B01	1	NPSL B12D2	0.66	3.80
14870	2013-10-19	Seattle United Shoreline Blue B01	1	Seattle United NE Blue B01	2	NPSL B12D2	0.99	2.02
13810	2013-10-12	Seattle United NE Blue B01	1	Storm King B01	1	NPSL B12D2	2.18	0.85
12794	2013-10-05	Impact FC Black B01	3	Seattle United NE Blue B01	3	NPSL B12D2	1.00	2.20
11847	2013-09-28	Mercer Island FC Cascade B01	1	Seattle United NE Blue B01	5	NPSL B12D2	0.78	4.50
10900	2013-09-21	Seattle United NE Blue B01	6	NSC Vortex B01	2	NPSL B12D2	3.80	0.66
9928	2013-09-14	Seattle United NE Blue B01	1	NSC Thunder B01	2	NPSL B12D2	2.10	1.14
8984	2013-09-07	Kent United Green B01	1	Seattle United NE Blue B01	1	NPSL B12D2	1.23	2.25

	date	home		away		venue	pred.home	pred.away
8371	2013-08-25	Seattle United NE Blue B01	8	WS Thundebirds B01	1	Xtreme Cup BU12	4.75	0.44
7991	2013-08-24	FC Edmonds Riptide B01	3	Seattle United NE Blue B01	1	Xtreme Cup BU12	1.71	0.58
7671	2013-08-23	Seattle United NE Blue B01	0	Tacoma United San Martin B01	1	Xtreme Cup BU12	1.41	2.26
7007	2013-08-17	Kent United Green B01	2	Seattle United NE Blue B01	1	Bigfoot Silver U12	1.23	2.25
6767	2013-08-16	ISC Arsenal White B01	1	Seattle United NE Blue B01	8	Bigfoot Silver U12	0.12	7.44
6668	2013-08-15	Seattle United NE Blue B01	3	Lake Hills Legends B01	1	Bigfoot Silver U12	3.92	0.64
4966	2013-07-28	Seattle United W Blue B01	2	Seattle United NE Blue B01	0	Crossfire Select Cup BU12 Gold	1.38	1.10
4663	2013-07-27	Kent United Green B01	0	Seattle United NE Blue B01	2	Crossfire Select Cup BU12 Gold	1.23	2.25
4670	2013-07-27	Seattle United NE Blue B01	5	Mercer Island FC Cascade B01	0	Crossfire Select Cup BU12 Gold	4.50	0.78
4501	2013-07-26	Seattle United NE Blue B01	1	TUSK United B01	2	Crossfire Select Cup BU12 Gold	1.18	1.79
1355	2013-06-16	FC Edmonds Riptide B01	1	Seattle United NE Blue B01	0	Shoreline Classic BU12	1.71	0.58
1110	2013-06-15	Seattle United NE Blue B01	5	Mercer Island FC Cascade B01	0	Shoreline Classic BU12	4.50	0.78
1114	2013-06-15	Emerald City FC White B01	0	Seattle United NE Blue B01	7	Shoreline Classic BU12	0.44	4.42
934	2013-06-14	FC Edmonds Riptide B01	1	Seattle United NE Blue B01	1	Shoreline Classic BU12	1.71	0.58